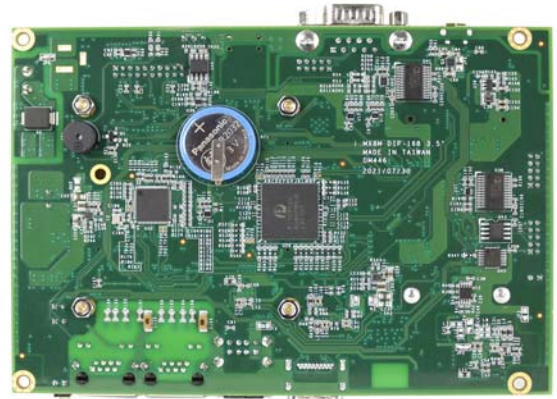
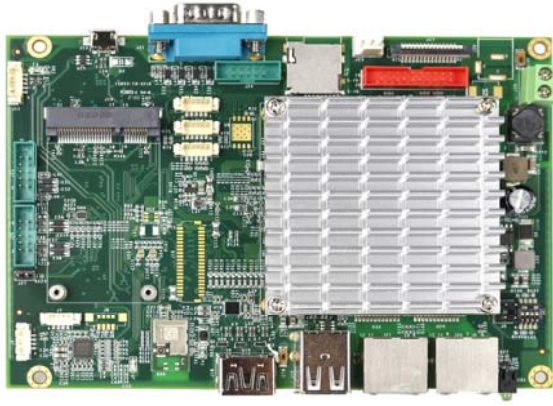


# NX8MM-35



## Specifications

CPU	NXP i.MX8M Mini Quad, 4 x Cortex-A53 1.6GHz		
RAM	2/4GB LPDDR4 Onboard		
Display	GPU: GCNanoUltra for 3D acceleration/GC320 for 2D acceleration. HDMI: Maximum resolution up to 1920 x 1080 @ 60Hz MIPI-DSI(chosen between HDMI): Maximum resolution up to 1920 x 1080 @ 60Hz		
LAN	GbE x1	GbEx2(Optional)	
Disk Support	On board eMMC 8~64GB (MLC)	Micro SD card	
I/O Interface	USB (ver. 2.0) x4 (1 Micro USB for OTG)	COM x4 (RS232/RS485)	i2c x1
	SPI x2 (1 chosen between COM)	MiniPCIe x1	Wi-Fi&Bluetooth
	MIPI-CSI x1	16-bit GPIO x1	HD Audio
Connectors	HDMI Connector x1 RJ45 Connector x1 (2 for optional) micro USB x1 2.0mm 10-pin box header for COMx4 MiniPCIe slot x1 2.-pin box header for DC 5V input x1	1.0mm 40-pin wafer for MIPI-DSI Micro SD card slot 1.25mm 5-pin wafer for USB x1 1.25mm 5-pin wafer for i2c x1 2.0mm 20-pin box header for 16-bit GPIO DC-Jack for DC 5~30V input x1	1.0 mm 15-pin wafer for MIPI-CSI USB Type A x2 D-SUB 9-pin male connector for COM1 x1 1.25mm 5-pin wafer for SPI x2 1.25mm 4-pin wafer for HD audio x3
Power Requirement	DC +5~30V		
Operating Temperature	-20°C to +70°C		-40°C to +80°C (Optional)
Dimension	146 x 111 mm		
Weight	170g		
O/S Support	Yocto Linux	Android	

## Ordering Information

PART NO.	CPU	DRAM (LPDDR4)	Storage	Display	GLAN	USB (ver. 2.0)	COM	MiniPCIe
NX8MM-35-2CMEHG	1.6GHz (Quad Core)	2GB	onboard eMMC 16GB Micro SD card x1	HDMI	1	4	4	1
NX8MM-35-2CMEHG2	1.6GHz (Quad Core)	2GB	onboard eMMC 16GB Micro SD card x1	HDMI	2	4	4	N/A
NX8MM-35-2CMEDG	1.6GHz (Quad Core)	2GB	onboard eMMC 16GB Micro SD card x1	MIPI-DSI	1	4	4	1
NX8MM-35-2CMEDG2	1.6GHz (Quad Core)	2GB	onboard eMMC 16GB Micro SD card x1	MIPI-DSI	2	4	4	N/A